



UNI-Interlocked™

STEEL ROOF TRUSS SYSTEM

An Intelligent & Innovative System



Today's

SMART, RELIABLE & SAFE

ROOF TRUSS SYSTEM



 通用金属有限公司 **TONG YONG METAL SDN. BHD.** Co. No. 237334-X

Head Quarter

Lot 5779 & 5780, Jalan Seladang, Alma, 14000 Bukit Mertajam, Seberang Perai Tengah, Penang, Malaysia.

Tel : 604 - 5523 086 / 5523 089 / 5523 090

Fax : 604 - 5523 087

Email : tymh@tm.net.my

Website : www.tongyongmetal.com

Branch

No. 20 & 22, Jalan Anggerik Mokara 31/60, Kota Kemuning Industrial Park, Kota Kemuning, 40460 Shah Alam, Selangor Darul Ehsan, Malaysia.

Tel : 603 - 5122 3944

Fax : 603 - 5121 5712



UNI-Interlocked™

STEEL ROOF TRUSS SYSTEM

An Intelligent & Innovative System

TONG YONG METAL SDN. BHD.

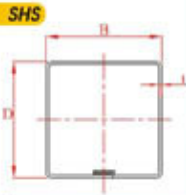
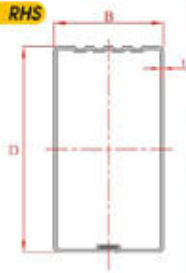


The Merits & Advantages Of

THE UNI-Interlocked™ STEEL ROOF TRUSS SYSTEM

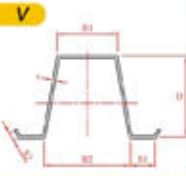
- Durable
- Termite Proof
- Unlimited Length
- Environmentally Friendly
- Lightweight
- Price Stability
- Strength & Safety
- Easy Fabrication & Erection
- Fire Resistant
- Uniform Quality
- Dimensionally Stable
- Warranty
- CAD Design
- Tested & Proven

COLD-FORMED RECTANGULAR/SQUARE HOLLOW SECTION PROPERTIES



RHS/SHS	Exact Dimension			Weight kg/m	Area mm ²	Second Moment of Area		Radius of Gyration		Elastic Modulus	
	Depth D mm	Base B mm	Thickness t mm			I _x 10 ⁸ mm ⁴	I _y 10 ⁸ mm ⁴	r _x mm	r _y mm	Z _x 10 ³ mm ³	Z _y 10 ³ mm ³
						mm	mm	mm	mm	mm	mm
15x25x0.42	15	25	0.42	0.31	31.20	2.80	1.00	9.19	5.54	0.21	0.35
25x25x0.42	25	25	0.42	0.40	42.00	4.30	4.30	20.03	20.03	0.34	0.34
25x25x0.45	25	25	0.45	0.42	45.00	4.40	4.40	20.02	20.02	0.36	0.36
25x25x0.55	25	25	0.55	0.52	55.00	5.30	5.30	9.90	9.90	0.43	0.43
25x25x0.70	25	25	0.70	0.66	70.00	6.70	6.70	9.92	9.92	0.54	0.54
25x50x0.42	50	25	0.42	0.57	63.00	21.70	7.50	18.45	10.84	0.87	0.60
25x50x0.55	50	25	0.55	0.75	87.50	27.20	9.40	18.16	10.67	1.10	0.76
25x50x0.70	50	25	0.70	0.95	105.00	34.70	11.90	18.34	10.73	1.39	0.95
50x50x1.00	50	50	1.00	1.78	196.00	76.50	20.01	20.01	20.01	3.14	3.14
50x50x1.20	50	50	1.20	2.14	234.20	93.00	23.93	19.93	19.93	3.72	3.72
50x50x1.60	50	50	1.60	2.92	320.00	117.63	19.49	19.49	19.49	4.86	4.86
40x60x0.45	50	40	0.45	0.73	81.00	31.00	22.10	19.65	16.59	1.24	1.10
40x75x0.55	75	40	0.55	1.12	126.50	98.60	37.50	27.96	17.30	2.61	1.88
40x75x0.60	75	40	0.60	1.23	136.60	106.60	40.80	27.94	17.28	2.84	2.04
40x75x0.80	75	40	0.80	1.63	184.00	140.80	53.70	27.86	17.20	3.76	2.88
40x75x1.00	75	40	1.00	2.04	226.00	174.40	66.20	27.78	17.11	4.65	3.33
40x100x0.55	100	40	0.55	1.36	154.00	197.50	48.20	35.95	17.36	3.95	2.41
40x100x0.60	100	40	0.60	1.48	166.60	215.60	52.40	35.92	17.34	4.30	2.62
40x100x0.80	100	40	0.80	1.97	224.00	284.50	69.00	35.84	17.66	5.69	3.45
40x100x1.00	100	40	1.00	2.46	276.00	352.90	85.20	35.76	17.57	7.06	4.26
65x150x1.00	150	65	1.00	3.73	426.00	1261.80	149.00	54.42	28.62	16.83	10.74
65x150x1.20	150	65	1.20	4.48	530.20	1506.70	175.50	54.34	28.53	20.09	12.78
65x150x1.60	150	65	1.60	6.04	688.00	1963.00	238.30	53.82	28.38	26.46	16.98
65x150x2.00	150	65	2.00	7.55	860.00	2421.10	300.77	53.56	27.97	32.72	20.96

COLD-FORMED HAT SECTION PROPERTIES



Section	Exact Dimension						Weight kg/m	Area mm ²	Second Moment of Area		Radius of Gyration		Elastic Modulus	
	Depth D mm	Flange B1 mm	Base B2 mm	Lips S1 mm	Lips S2 mm	Thickness t mm			I _x 10 ⁸ mm ⁴	I _y 10 ⁸ mm ⁴	r _x mm	r _y mm	Z _x 10 ³ mm ³	Z _y 10 ³ mm ³
									mm	mm	mm	mm	mm	mm
V(S)35.42	35	25	38	12	3	0.42	0.45	53.20	9.90	17.10	14.60	17.90	0.55	0.59
V(S)35.50	35	25	38	12	3	0.50	0.52	63.30	11.74	20.39	13.60	17.90	0.65	0.70
V60.42	40	30	44	12	3	0.42	0.48	58.80	14.00	23.50	15.40	20.00	0.71	0.67
V60.50	40	30	44	12	3	0.50	0.58	70.00	16.70	28.00	15.40	20.00	0.85	0.80
V60.42	60	30	51	12	3	0.42	0.66	76.40	37.80	36.30	22.30	21.80	1.26	0.94
V60.50	60	30	51	12	3	0.50	0.79	90.00	45.01	43.20	22.30	21.80	1.50	1.12

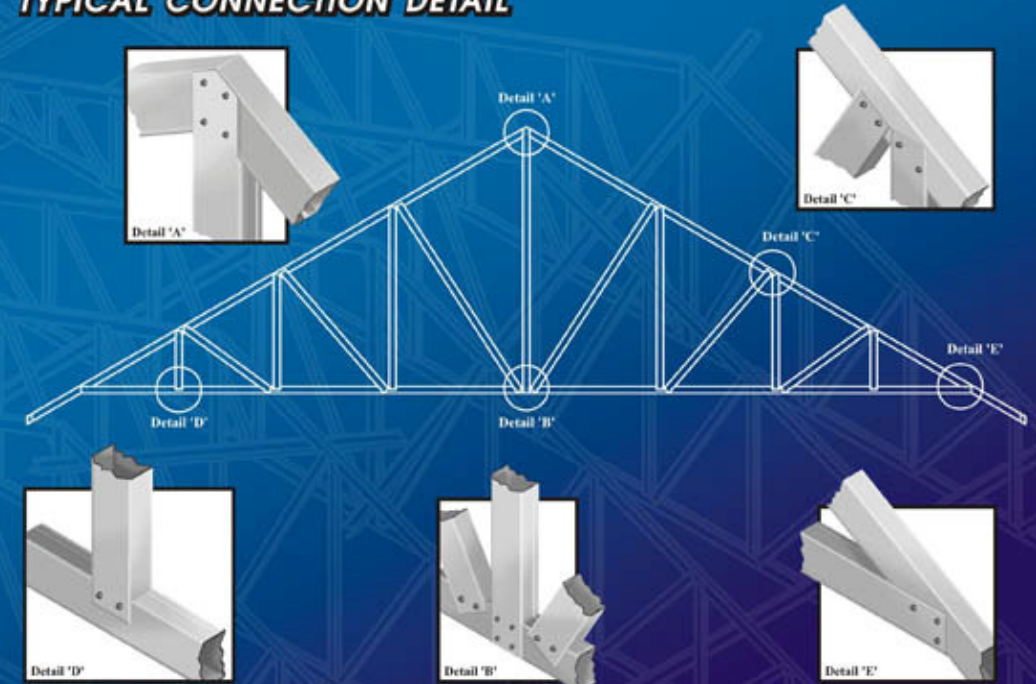
TOLERANCES

- Outside Dimension : ± 1mm
- Angular Tolerances : ± 2° max.
- Tolerances of Length : ± 5mm

MATERIAL SPECIFICATIONS

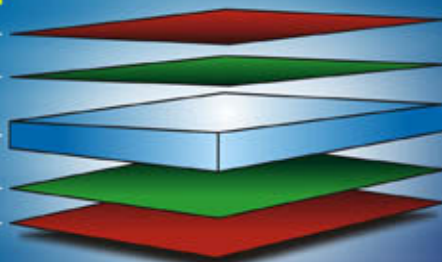
- Steel Grade : JIS 3302 : SGC 570 or SGC 440 (thk ≥ 1.2mm), AS 1397-1993
- Yield Stress : 550 Mpa minimum or 400 Mpa minimum (thk ≥ 1.2mm)
- Coating : Galvanized Iron (GI) or Zincalume
- Coating Mass (g/m²) : Z12 ~ Z27 (120 ~ 275) or AZ 150 (150)

TYPICAL CONNECTION DETAIL



COATING ELEMENTS

- CHROMATED SURFACE
- ZINC COATING
- COLD ROLLED STEEL
- ZINC COATING
- CHROMATED SURFACE



* Intellectual Property

UK Patent No. GB 2371814 and Taiwan Patent No. 159365 for "A Light Weight Building Material". Registered Industrial Design in Malaysia, UK, USA, Australia, Japan, Taiwan, China, Korea, Thailand, India, Sri Lanka with title "Roof Truss" and "Metal Pipe".

Products & Accessories

